

PATHWAYS TO MISSION



The South Carolina Conference
of the United Methodist Church

2014 / 2015

David Surret

Chair of S.C. Council on Finance and Administration



Why do we give? It seems foreign to the self-centered age in which we live. Grab! Get! Take! Those are the actions in which we are encouraged to participate by advertisements and commercials.

What makes us to be generous people, to give with or without reason? It could be the reward we receive, or the emotion we feel when we give. The response from the recipient could encourage us to become generous, giving people. Yet these are inadequate reasons.

As disciples of Christ Jesus, we give solely because He first gave to us. In the life, sacrifice and resurrection of our blessed Savior, each of us was given our very life and our eternal hopes. It is from the grace and love of Jesus that we are prompted, promoted and impulsively required to return that first great gift. This is the truest reason for Christian giving.

In the United Methodist tradition, we have a system of organized and disciplined financial giving called apportionments. Far too often, our people see apportionments as taxes. This is a narrow, limited view of what apportionment giving does. Apportionments allow every United Methodist in the most remote location to support significant ministry in an equally far place. They provide support and structure for the work of one of the most progressive and forward-thinking groups of faith believers anywhere.

Within South Carolina there are a multitude of ministry needs – college students who may be examining the possibility of entering ordained ministry, seniors requiring support in our retirement centers, youth and adults wanting to serve others in poverty through Salkehatchie Summer Service and the large number of new residents moving into the state. Your gifts through apportionment giving seek to respond to these needs and challenges. They bring both hope and help to many, many persons!

I encourage you and your local congregation to discover new and creative ways to reach more and more persons with the Gospel, encouragement and hope of Christ. Reflect on the graciousness of God and you will find vital places and people who will be deeply touched and renewed by your gifts, service and stewardship.

Resident Bishop

Jonathan Holston
Bettye Rivers, secretary
(O) 803-786-9486 ext. 307
bishop@umcsc.org

District Offices

Anderson District

P.O. Box 1057, Anderson, SC 29622
(O) 864-226-6649; (F) 864-225-1399
andist@umcsc.org

Charleston District

1125 E. Montague Ave., North Charleston, SC 29405
(O) 843-744-0477; (F) 843-744-0479
chdist@umcsc.org

Columbia District

4908 Colonial Drive, Columbia, SC 29203
(O) 803-786-9486; (F) 803-735-8799
codist@umcsc.org

Florence District

P.O. Box 408, Florence, SC 29503
(O) 843-669-5992; (F) 843-673-9883
fldist@umcsc.org

Greenville District

213 College St., Greenville, SC 29601
(O) 864-233-3611; (F) 864-242-1272
gvdist@umcsc.org

Greenwood District

P.O. Box 49968, Greenwood, SC 29649
(O) 864-223-2650; (F) 864-223-4099
gwdist@umcsc.org

Hartsville District

108 W. Pinewood Ave., Hartsville, SC 29550
(O) 843-332-1631; (F) 843-332-3200
hadist@umcsc.org

Marion District

P.O. Box 543, Marion, SC 29571
(O) 843-423-1202; (F) 843-423-6775
madist@umcsc.org

Orangeburg District

P.O. Box 303, Orangeburg, SC 29116
(O) 803-534-7564; (F) 803-534-5474
ordist@umcsc.org

Rock Hill District

139 Elizabeth Lane, Rock Hill, SC 29730
(O) 803-328-0218; (F) 803-328-6909
rhdist@umcsc.org

Spartanburg District

364 S. Pine St., Suite B120,
Spartanburg, SC 29302
(O) 864-583-5109; (F) 864-583-1134
spdist@umcsc.org

Walterboro District

P.O. Box 829, Walterboro, SC 29488
(O) 843-549-5441; (F) 843-549-6073
wadist@umcsc.org

Why Give?

As Christians, we have been taught to give a portion of what we have back to God, Christ and the Church. Deuteronomy 14:22 says, "Make an offering of ten percent, a tithe, of all the produce which grows in your fields year after year."

So when you give your tithe to the church, whether as a pledge or loose plate offering, where does the money go?

Think of your giving as this loaf of bread.

More than 84% of what we give stays in the local church. A majority of these local funds are used for expenses such as buildings, administration, salaries and other costs. The remainder helps fund ministries such as community outreach programs, education, worship and other things associated with making disciples for Christ.

The remaining portion of our giving, about 16%, goes to what we call apportionments.

Apportionments serve as our financial partnership with all other United Methodists. Together we reach out to our communities and the entire world in sharing God's love. Whether a small, medium or large-membership church, we can do more for Christ through the apportionments system than we can do alone.

So what do apportionments really do? Most of the money – 12.4% - stays on the state and regional levels, while 3.3% supports the work of our global United Methodist boards and agencies that reach out across the country and around the world.

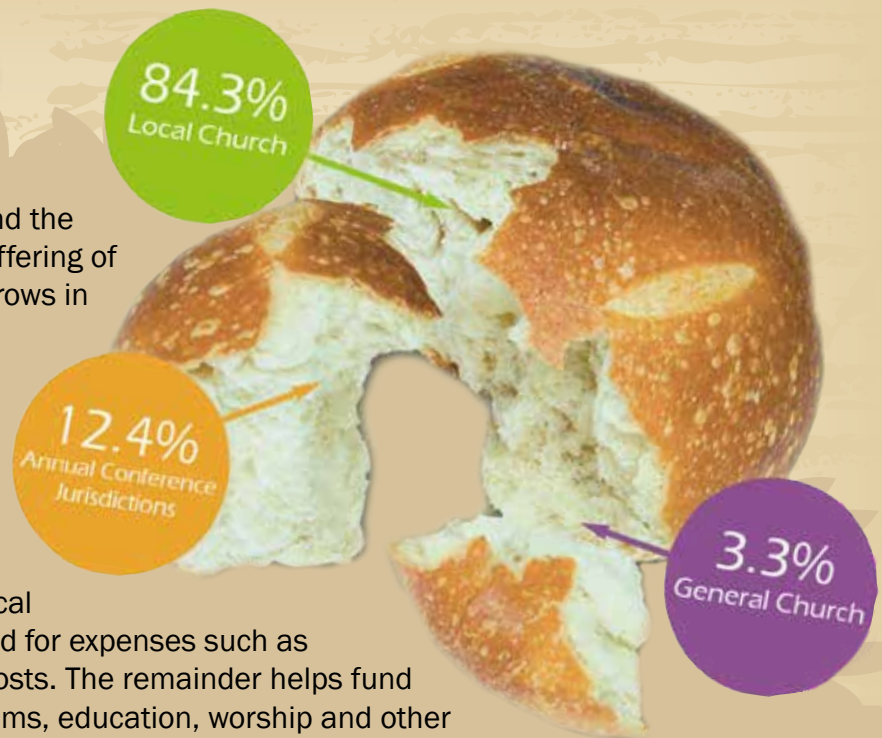
Our apportionments provide for missionaries all around the world, resources for existing church, and funds to start new churches here in South Carolina. They provide for retired clergy, and they supplement pastors' salaries in transitional church settings.

Apportionments also help to personify our connection through people like our district superintendents and congregational specialists, who help equip local churches for disciple-making ministries. They provide for our bishops who shepherd and lead us in our ministries around the globe.

Some of our money goes to scholarships for United Methodist students at Wofford College, Columbia College, Claflin University and Spartanburg Methodist College. Our money also helps provide for ministries on other college campuses across the state. We support the 11 traditionally black colleges and universities, including Claflin...and through our apportionments, we help to build and maintain Africa University, the only United Methodist university in Africa.

A portion of our giving helps seniors afford to live in one of our three South Carolina retirement homes. It also funds a camp and a retreat center, available for Methodists of all ages, and ensures our continued fellowship with Christians of other denominations.

Apportionments allow us to do more together than we could ever do individually. As John Wesley said, "Earn all you can, save all you can, and give all you can." Together we do our best for Christ.





Being a Methodist Missionary

"The reason I currently pursue ministry as a young adult missionary is because others made it a priority to be my personal missionaries."

As a missionary, people often ask me about the ways my home church impacted my life. For the last few years, I've answered this question in this way: "Lots of people come to church without ever getting involved in anything more than the Sunday service. That was never really an option for my family and me. If it wasn't for the church, I wouldn't be here today."

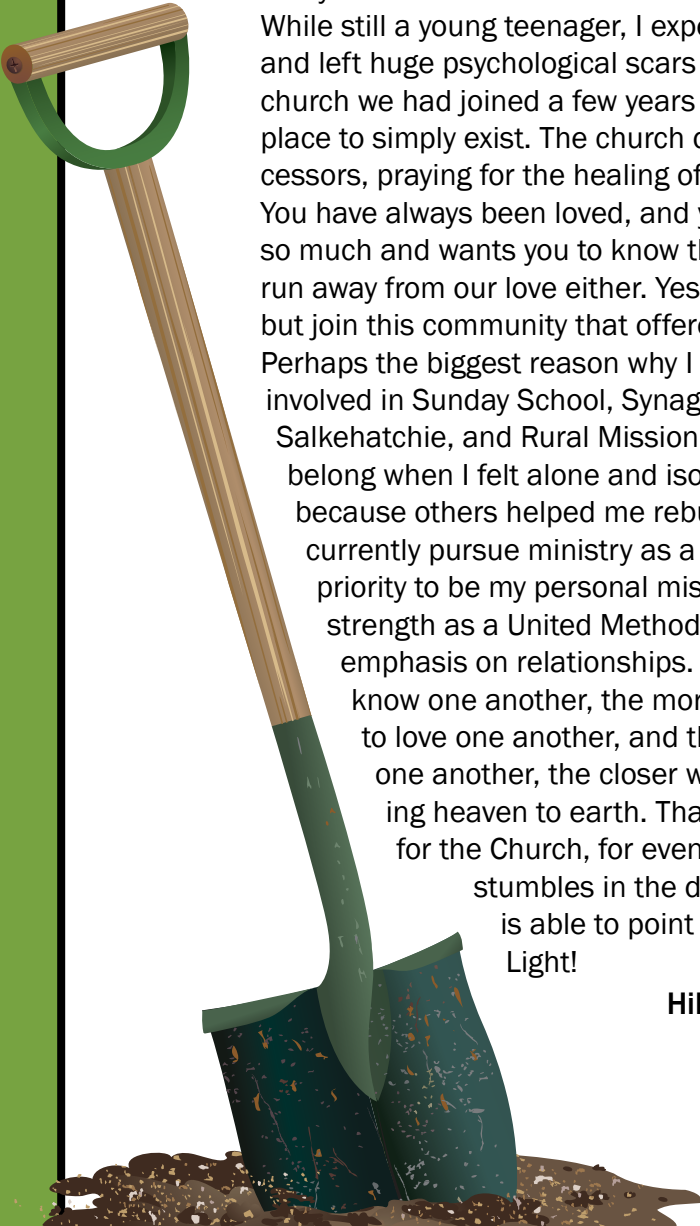
While still a young teenager, I experienced a number of family crises. They were very painful and left huge psychological scars on all of us. During this tumultuous time, Shandon UMC (the church we had joined a few years before) welcomed my family with loving arms, and gave us a place to simply exist. The church did this without prying into our pain. They became our intercessors, praying for the healing of our wounds. You are loved, they would say by their actions. You have always been loved, and you will always be loved. This world needs you. God loves you so much and wants you to know that. It's something you can't run away from. And you can't run away from our love either. Yes, my dear...God has great plans for you. How could we help but join this community that offered us sanctuary when our world was crashing in on us?

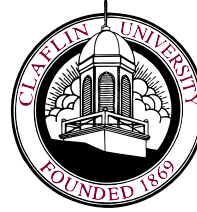
Perhaps the biggest reason why I spent my entire youth

involved in Sunday School, Synago Bible studies, church choirs, youth group, Salkehatchie, and Rural Mission projects was because the church offered me a place to belong when I felt alone and isolated. The reason I loved volunteer construction work was because others helped me rebuild what it meant to be Hillary Taylor. The reason I

currently pursue ministry as a young adult missionary is because others made it a priority to be my personal missionaries. Our strength as a United Methodist Church is our emphasis on relationships. The more we know one another, the more we can grow to love one another, and the more we love one another, the closer we are to bringing heaven to earth. Thanks be to God for the Church, for even though it often stumbles in the dark as we do, it is able to point us towards the Light!

Hillary Taylor





\$2.6 million goes to **higher education and camps.**

Supporting Higher Education:

Through your giving, you help to equip our future leaders locally by providing support for Spartanburg Methodist College and providing scholarships to Clafin University, Columbia College and Wofford College. You also contribute to the campus ministries at eight colleges and universities around the state.

Your impact, however, reaches much further than just South Carolina. You help support the 11 historically black United Methodist colleges across the United States, including Clafin University in Orangeburg.

Globally, your offerings help to give a quality education to students at Africa University in Zimbabwe, Africa's first and only United Methodist university.



Camps and Retreats:

Your continued support of Camps and Retreats helps provide for the development, operations and maintenance of Asbury Hills. Your contributions also provide camp scholarships for children who otherwise could not afford to enjoy the camp experience.



Impact areas:

- Camps and Retreats
- Senior College Scholarships
- Spartanburg Methodist College
- Campus Ministry
- Black College Fund
- Africa University Fund

Multisite Mission Hits Milestone with Worship Launch

On February 9 2014, St. Andrew By-The-Sea UMC became one church in two locations as the Hilton Head church launched its first weekly worship service in the neighboring community of Bluffton. The service marked years of prayer and planning by the SC Conference and St. Andrew for broadening a strong United Methodist presence in greater Bluffton, identified as the fastest-growing area in the state. It is the first multisite church to be developed in the conference. St. Andrew's leadership has seen the extension as a mission outreach to those seeking to grow in faith, as well as a model for congregational growth in which United Methodist Churches might find new ways to collaborate. Already, St. Andrew and the Church of the Palms have come together to sponsor a Boy Scout Troop in Bluffton.



The Rev. Daniel Burbage was appointed to St. Andrew in June of 2012 and spent nearly a year absorbing the values and traits of St. Andrew, building relationships at the Hilton Head Campus and in the Bluffton community, and working to establish new missions. Among the efforts was the creation of a faith-based tennis program for kids called "Let's Serve." Each tennis session covers basic skills, as well as a devotion and a mission project. Christmas Grace was held in December at the church's Bluffton Ministry Center, a 1,400, square-foot space used for meetings, Bible study, a Counseling Center, Mother's Morning Out and other programs. Those identified as being in need for Christmas had the opportunity to come to a shop set up by volunteers where they could select toys, household items, receive a Bible and engage in prayer.

Prior to the worship launch a number of preview services and fellowship events were offered in Bluffton including an oyster roast, "Worship at the Water," a Valentine's renewal of vows, and "Christmas Eve Under the Stars" which drew 500 this year to a clear top tent for a candlelight service. The weekly worship services are being held in a lecture hall the church is leasing from the University of South Carolina (Beaufort) at the Hilton Head Gateway

Campus. The university facility provides additional opportunities for mission and outreach on a college campus in addition to attracting nearby neighborhoods to worship.

"We are grateful for the help and support of the SC Conference and the office of Congregational Development in reaching this moment in our joint goal of mission outreach to Bluffton," said St. Andrew Senior Pastor Neil Yongue Jr. "While the multisite worship launch is a milestone, we are continuing to pray and think outside the box about new ways of creating relationships with the community and our fellow United Methodist churches in making disciples of Jesus Christ for the transformation of the world."



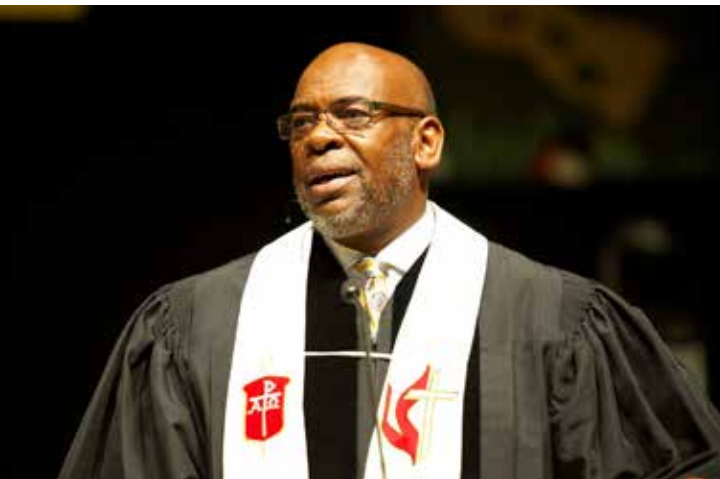
\$5.2 million goes to **providing leadership**

As South Carolina continues to experience a dynamic population boom, the United Methodist Church stands poised to serve new and existing disciples of Christ. By investing in our churches and their leadership, the conference can grow as the state grows.

Congregational development is a key priority for the conference, working to strengthen and advance existing churches, as well as launch new churches and outreach areas.

Another major aspect of nurturing our churches involves clergy support, both through the Ministerial Education Fund and the Equitable Compensation Fund. Some of these funds support compensation for pastors who serve churches in transitional communities, including new church starts. The conference continues to nurture our aging clergy through the three Methodist Retirement Homes, and supports retired pastors and their spouses through the Retiree Health and Transitions Fund, helping with insurance premiums, grants for clergy in transition because of health and disability issues, and more.

Finally, oversight of the conference through the vital leadership of our bishop and 12 districts ensure the connectionalism of the UMC through a healthy relationship among that local church, district, conference and beyond.



Impact areas:

- Congregational Development
- Equitable Compensation
- Ministerial Education Fund
- Methodist Homes
- Retiree Health
- Episcopal Fund
- District Administration



Nurturing Growth



Doing Ministry Being the Church

\$5.9 million allows us to do ministry

Our connectionalism is how the United Methodist Church can do so much ministry around the globe. When you give at your local church, you are supporting the worldwide church through the UMC's General Boards and Agencies in the United States and around the world. Your offerings also provide for General and Jurisdictional Conferences which meet every four years.

You are also supporting the work of the South Carolina Conference through Connectional Ministries, congregational specialists, the Advocate newspaper and the Board of Ordained Ministry. These funds provide for programs like Salkehatchie Summer Service, and Advance Special Ministries, including United Methodist Volunteers in Mission, Killingsworth Home and Rural Mission.

In short, your giving goes far beyond just your local church. It touches the lives of people across the state and around the world. It's how we do ministry and be the church.



Salkehatchie

South Carolina
United Methodist Advocate
CONNECTING METHODISTS IN SOUTH CAROLINA SINCE 1837

Impact areas:

- Conference Benevolences
- World Service
- General Conference Administration
- Interdenominational Cooperation Fund
- Jurisdiction Mission/Ministry

UMVIM Teams: Christian Love in Action



- Maria Elsy Franco,
Cali, Colombia



The experiences I shared with all of the UMVIM missionaries have changed my life; I learned many things about them that allowed me to learn about myself and showed me the way to discover the inner missionary I have in me.

Prior to my experience with the Volunteers in Mission, I'd worked in different places mostly helping children from poor communities, always trying to give my best all the time as I learned from my parents and grandparents since I was a little girl.

From the moment I knew about the mission in Colombia, I got excited because for the first time I would be involved with a specific goal that was shared by a whole team of people that were working for God.

Since the moment UMVIM arrived in Cali, I had the opportunity to learn from all the missionaries: their organization, love, hard work, humility and their keen interest to work for our God with unconditional love and passion. Traveling abroad away from their families and homes to a new place full of enthusiasm, joy and ready to help unknown people is a wonderful example of the love of God.

I give thanks for all I've learned from the UMVIM teams, the experiences and the wisdom they shared, not just with their words but with their actions. I am thankful for the love and kindness they put in everything they do and for allowing me to be part of such a wonderful task.

Methodist Volunteers left the print of God and His love in Colombia and all over the people that work among us.

Did you know that 730 UMVIM teams left from Southeastern Jurisdiction in 2013 to be in mission in 65 countries around the world?

Bearing Fruit

Congregational Specialists



Rev. Jeffery Salley
Columbia
Hartsville
Specializing in
African-American Ministries
jsalley3@umcsc.org
803-240-9938



Rev. Cathy Joens
Anderson
Greenville
Specializing in
Christian Education
cljoens@umcsc.org
864-940-1893



Rev. Jim Arant
Orangeburg
Greenwood
Specializing in
Leadership & Strategic Planning
jarant@umcsc.org
803-727-0327



Chris Lynch
Spartanburg
Rock Hill
Specializing in
Young People Ministries
clynch@umcsc.org
864-590-4628



Rev. Millie Nelson Smith
Florence
Marion
Specializing in
Mission Education
mnelsonsmith@umcsc.org
803-960-5733



Rev. Genova McFadden
Walterboro
Charleston
Specializing in
Congregational Revitalization
gmcadden@umcsc.org
843-300-9642

Congregational Specialists Engage, Equip and Empower

ENGAGE

- 1 **Connect with Congregations** with their presence by listening and building relationships and establishing trust.
- 2 **Challenge Congregations** to be more than they think they can be.
- 3 **Helping Congregations Grow** in their relationship with God and understanding and doing God's will.

EQUIP

- 4 **Lead Congregations** through a process and give them the flexibility to follow the lead of the Holy Spirit
- 5 **Providing Congregations** with leadership and training based on their particular needs.
- 6 **Utilizing Years of Experience** Constantly learning and sharing what they've learned.

What We Do

Congregational Specialists

Engage, Equip and Empower congregations to fulfill their mission of making disciples of Jesus Christ for the transformation of the world.



OBJECTIVES

Partnership

There is no one who knows more about your community and your congregation than you. Congregational specialists come alongside you and together you discern the plans that God has for the life and ministry of your congregation.

The most effective leaders don't provide the answers, they simply raise powerful questions that allow you to see more clearly the pathway that God has for you!

EMPOWER

- 7 **Informing Congregations** so as congregations grow in faith, they grow in competence and confidence.
- 8 **Celebrating with Congregations** as they move toward God's preferred future.
- 9 **Stepping Aside** so congregations can be released to do God's calling.
- 10 **On Call** so that when a congregation needs help again, a specialist will be there to help.

Make A Difference

South Carolina
United Methodist Conference
4908 Colonial Dr.
Columbia, SC 29203

803-786-9486

www.umcsc.org





For more detailed information visit
<http://www.umcsc.org> under the ministries tab

The Mission of the South Carolina Conference Advance Special Ministries Network is to see, cultivate, and share a wide range of United Methodist Resources to support and strengthen our ministries.

- ➔ **Alston Wilkes Society**
Anne Walker | 803-799-2490 | www.alstonwilkessociety.org
- ➔ **Bennettsville-Cheraw Area Cooperative Ministry**
Rev. Leatha Brown | 843-523-6550 | bcacm@bellsouth.net
- ➔ **Bethlehem Community Center (Columbia)**
Bessie Geiger | 803) 807-9582 | <http://bethlehemcenter.org>
- ➔ **Bethlehem Center (Spartanburg)**
Patrena Mims | 864-582-7158 | www.bethlehemctr.org
- ➔ **Coastal Samaritan Counseling Center**
Kathy Heustess | 843-448-4820 | www.coastalsamaritan.org
- ➔ **The Cooperative Ministry**
Wanda Pearson | 803-799-3853 | wpearson@coopmin.org
- ➔ **Interfaith Community Services of South Carolina**
803-252-8390 | www.interfaithcommunityserices.org
- ➔ **Killingsworth**
Rev. Diane A. Moseley | 803-771-6359 | www.killingsworthhome.org/
- ➔ **Path (People Attempting To Help), Inc.**
Cheri Curtin | 803-684-3992 | pathministriesofyorksc.org
- ➔ **Rural Mission, Inc.**
Linda D. Gadson | 843-768-1720 | www.ruralmission.org
- ➔ **Tracy Jackson Program of G.I.F.T.**
Mary Lou Edens | 864-366-8517 | marylouumd@yahoo.com
- ➔ **United Methodist Volunteers in Mission**
Derial Ogburn | 803-237-3005 | www.UMVIM-SC.org
- ➔ **United Ministries**
Keith Trout | 864-232-6463 | www.united-ministries.org/
- ➔ **Wallace Family Life Center**
Corina Esaw | 843-479-7991 | wallace@bellsouth.net



Joyfully fulfilling Christ's mandate to care for those in need by
contributing generously of their time, talents, and resources.

Connectional Giving

World Service and Conference Benevolences

2014 / 2015

1. WORLD SERVICE (#585)\$2,060,254/\$2,045,912

This is the lifeline of our connectionalism. It makes possible the programs, resources and materials of the General Boards and Agencies at home and around the world.

2. CONFERENCE BENEVOLENCES

(#500).....\$2,350,594/\$2,310,144

This is the nurture and outreach arm of our Annual Conference. The largest portion goes to support the congregational specialists who provide resources and support for local church initiatives. It also supports the administration and program of Connectional Ministries, as well as the Board of Ordained Ministry, Archives and History, the Cabinet emergency fund, the Advocate and the Episcopal residence.

Ministerial Support

3. EPISCOPAL FUND (#210)\$601,590/\$613,614

Funds our share of support for all active and retired bishops, including salary, housing, travel, pensions and office expenses.

4. RETIREE HEALTH/

TRANSITION/CONTINGENCY (#255)\$1,952,536/\$1,952,536

Provides a significant subsidy (up to 80%) for health insurance premiums for retired clergy. It also provides grant funds for those in significant transitions, such as disability.

5. DISTRICT SUPERINTENDENTS'

COMPENSATION (#220)\$1,130,606/\$1,153,216

Provides an annual salary of \$88,200 for each of the 12 superintendents, plus worker's compensation insurance coverage.

6. EQUITABLE COMPENSATION FUND

(#240).....\$425,000/\$550,000

Provides salary support for pastors serving churches not able to meet the minimum standards set by the Annual Conference, as well as providing primary support for new church start pastors.

Administration

7. DISTRICT ADMINISTRATION (#100)\$830,000/\$830,000

Provides for district office operations, secretary's salary, the District Connectional Ministries, the institutional share of the superintendent's pension and insurance, continuing education and travel.

8. CONFERENCE ADMINISTRATION

(#550)\$1,557,947/\$1,599,947

Covers the expenses of the Annual Conference session, the Journal, liability insurance, conference secretary, treasurer's office, coordinator of clergy services and other administrative expenses.

9. JURISDICTION MISSION/MINISTRY (#575).....\$85,093/\$85,093

Covers expenses of Jurisdictional Conference and missions, programs and administration of the Southeastern Jurisdiction.

10. GENERAL CONFERENCE

ADMINISTRATION* (#590).....\$248,663/\$246,952

Covers expenses of the General Conference, the Judicial Council and other administrative agencies of the General Church.

Mission/Outreach

2014 / 2015

11. SENIOR COLLEGE

SCHOLARSHIPS (#310).....\$1,167,161/\$1,167,161

Helps provide quality education in a Christian setting for students at Claflin, Columbia and Wofford colleges. One-third of total receipts goes to each institution.

12. SPARTANBURG METHODIST

COLLEGE (#325).....\$634,838/\$634,838

Support fund for our two-year college, providing programs of academic excellence, work-study opportunities and programs for those with special academic needs.

13. CAMPUS MINISTRY (#330)\$637,801/\$637,801

Goes to the support of full-time campus ministers at USC, Clemson, South Carolina State, Claflin, Winthrop and Charleston colleges, as well as to part-time ministers at Francis Marion and Lander.

14. METHODIST HOMES

RESIDENTS' ASSISTANCE (#350)\$540,228/\$540,228

Goes to the support of Orangeburg, Greenwood and Pee Dee retirement communities and nursing homes and is divided 50% to Methodist Oaks, 35% to Wesley Commons and 15% to Methodist Manor of the Pee Dee.

15. CAMPS AND RETREAT MINISTRIES (#375) ...\$311,908/\$328,000

Provides for the development, operations and maintenance of Asbury Hills in the mountains and Sewee Coastal Retreat near Charleston.

16. CONGREGATIONAL DEVELOPMENT (#385) ...\$960,000/\$960,000

Assists in the purchase of land for new church sites, helps newly organized churches and assists in revitalization programs for existing churches.

17. MINISTERIAL EDUCATION (#600)\$707,317/\$702,384

Three-fourths of receipts goes for support of our United Methodist seminaries and one-fourth remains in our conference for scholarships, grants and loans to South Carolina seminary students.

18. INTERDENOMINATIONAL COOPERATION

FUND (#670)\$55,291/\$54,958

Supports church activities in mission with other Christian communions, including the World and National Councils of Churches and the Consultation on Church Union.

19. BLACK COLLEGE FUND (#710)\$282,129/\$280,188

Our share of support for 10 historically black United Methodist colleges and one medical school in the United States. Claflin College in Orangeburg is one of these institutions.

20. AFRICA UNIVERSITY FUND (#715)\$63,136/\$62,695

Continues development of the first United Methodist university on the continent of Africa. Offers post-secondary education through schools of agriculture, theology and management and business.



Connectionalism

How apportionments are calculated

Apportionments are calculated from Statistical Table 2 for each church in the Conference. These amounts are collected in January. We refer to the total of the selected lines as "Net Funds."

- Total amount paid in base compensation to the pastor
- Total amount paid in base compensation to all associate pastors assigned by the bishop
- Total amount paid to/for pastor and associate(s) for housing and utilities and/or related allowances
- Total amount paid to pastor and associate(s) for accountable reimbursements
- Total amount paid to pastor and associate(s) for any other cash allowances (non accountable)
- Total amount paid in salary and benefits for deacons
- Total amount paid in salary and benefits for diaconal ministers
- Total amount paid in salary and benefits for all other church staff
- Total amount spent for local church program expenses
- Total amount spent for other local church operating expenses

Once these are added for each church we allocate the apportionments based on a weighted average based typically on a four year average. So the 2014 apportionment calculation will be calculated with an average based on the amounts reported in 2009, 2010, 2011 and 2012.

$$\frac{\text{My Church's Net Funds}}{\text{All Churches' Net Funds}} \times \text{Conference Apportionment} = \text{My Church's Apportionment}$$

A few important points

- The placing of ACTUAL expenses on Table 2 is very important
- An expense should only be reported once on Table 2
- Items such as what a church spends on capital additions/improvements, debt repayments, direct billing and missions does not factor into the apportionment calculation if reported on the correct lines (i.e. not on lines above)
- Membership is not considered when calculating apportionments
- ONCE APPORTIONMENTS ARE SET THEY CANNOT BE CHANGED

Stewardship Summit

Keeping our promises

www.umcsc.org

Sept. 20
Shandon UMC



The Resource Center provides videotapes, DVDs and choral music to enhance the ministry of the churches in the S.C. Conference. Resources are available for borrowing on a wide range of topics, including Bible study, parenting, confirmation, church history, mission and ministry, leadership, spiritual growth, stewardship, United Methodists, world religions, worship, youth, children and more. The music library provides seasonal musicals, praise and worship collections and anthems.

For more information, visit
<http://www.umcsc.org/resourcecenter/>



When you know more, you can do more for the Kingdom.

Know more about the UMC by reading the South Carolina United Methodist Advocate newspaper! The award-winning Advocate has connected United Methodists in this state for 177 years.

Subscribe today!

- Individual print subscription \$15/year
- Individual online subscription \$8/year
- Church plan \$10/person per year with 10+ subscribers per church
- Online church plan \$1/church
- member per year based on church's average weekly worship attendance

AdvocateSC.org
advocate@umcsc.org | 888-678-6272

Children in Poverty

At the February 2013 meeting of the SC Conference Connectional Ministries, the Pan-Methodist Campaign for Children in Poverty was approved as an emerging ministry. Our conference accepted the challenge to become involved by helping children, especially those who are suffering and living in poverty. The Pan-Methodist Commission came into existence in 1985 to develop meaningful cooperation among other Methodist denominations to bear witness to Methodist principles and to affirm our Wesleyan heritage to care for the poor by encouraging “the people called Methodist” to serve children and youth at risk of poverty.



In 1996, the Pan-Methodist Campaign for Children in Poverty began when the bishops of these Methodist denominations launched a dramatic demonstration of their commitment to children in poverty. Today, the South Carolina Campaign for Children in Poverty wants to do a better job of educating congregations about the needs of children and the poor and to sensitize congregations to circumstances faced by children in order that churches might respond with acts of compassion and justice. The SC Task Force is encouraging partnerships with other community advocates, educators and our legislators. Our new vision is to reach into “The Corridor of Shame” and help that area become “The Corridor of Hope.”

WHAT CAN I DO?

- Monitor school board elections
- Establish an active partnership with a nearby school
- Recruit members to be volunteers at local schools
- Provide Backpacks of food items for weekends
- Provide school supply kits for neighborhood children
- Sponsor a fundraising event for a local public school
- Establish a free seasonal clothing closet
- Mentor children who need help
- Help with homework
- Join a child advocacy network
- Offer a well-publicized Vacation Bible School for the community
- Provide transportation to families in need
- Place a “Children and Poverty” bulletin board in strategic locations in your church



UMCOR's Top Five Ways to Give

The United Methodist Committee on Relief (UMCOR) is grateful for the generous support it receives from United Methodists and friends all year around. Your faithful giving enables UMCOR to meet emergency needs after a conflict or a devastating disaster.

Use these top five ways to give, compiled from responders and disaster survivors across the country, to guide you and your congregation in future giving:



James Rollins

After an UMCOR school-kit distribution in a rural community outside of Tbilisi, Georgia, this young girl curiously looks inside her bag. She was quite pleased when she came upon the crayons.

Be Hope.

- #5. A Sanctuary.** Open up your church as a safe place where survivors can experience love, care, and peace.
- #4. Training and Education—before disaster strikes.** The best help comes from those who are equipped for their role in assisting survivors. Learn how to help with cleaning up; providing comfort and care; and planning for local church involvement, including offers of shelter, food, or hospitality.
- #3. Prayers.** Never overlook the power of prayer as a response—both in the hours after a disaster strikes and through the long haul.
- #2. UMCOR Relief-Supply Kits.** Assemble or purchase kits to help keep UMCOR's Relief-Supply Network ready to quickly deliver vital goods into the hands of disaster survivors.
- #1. Cash Donations.** Financial gifts are the best donations. Give money through the UMCOR website, via text to RESPONSE 80888, by telephone at 800-554-8583, or by setting up an automated monthly withdrawal.

A one-time donation of \$10 will be added to your mobile phone bill or deducted from your prepaid balance. Message and Data Rates may apply. All charges are billed by and payable to your mobile service provider. Service is available on Verizon Wireless, AT&T, Sprint, and T-Mobile. All purchases must be authorized by the account holder. By participating you certify that you are 18 years or older and/or have parental permission. Donations are collected for UMCOR and subject to the terms found at igfn.org/t. Privacy policy: igfn.org/p. Text STOP to 80888 to stop; Text HELP to 80888 for help.



www.umcor.org/give

UMCOR is part of the General Board of Global Ministries

SC Conference Office
803-786-9486

Conference Secretary
Ken Nelson, ext. 263
conferencesecretary@umcsc.org

Clergy Services Coordinator
Ken Nelson, ext. 327
clergy@umcsc.org

Congregational Development
Director: Sara A. White, ext. 304
(e) sawhite@umcsc.org
Laura Hill, assistant, ext. 305
lhill@umcsc.org

Director of Connectional Ministries
Kathy James, ext. 312
(e) kjames@umcsc.org
Tammy Fulmer, administrative coordinator
ext. 313 (e) tfulmer@umcsc.org

Communications Director
Matthew Brodie, ext. 265
mbrodie@umcsc.org

Information Technology Director
Jim Crews, ext. 332
jcrews@umcsc.org

Resource Center Coordinator
Betty Stalnaker, ext. 309
bstalnaker@umcsc.org

Treasurer
Tony Prestipino,
(O) 803-735-8790 ext. 323
aprestipino@umcsc.org

Pensions and Health Benefits Administrator
David Anderson,
(F) 803-691-6604 ext. 326
dlanderson@umcsc.org

S.C. United Methodist Advocate Newspaper
Jessica Connor, editor
(F) 803-735-8168 ext 338
jconnor@umcsc.org

Receptionist
Mary Jane Lever, ext. 301
mjlever@umcsc.org

Camps and Retreats Director
Arthur Spriggs
864-458-2071
aspriggs@sccampsandretreat.org

S.C. Conference Lay Leader
Ms. Barbara Ware
(e) conferencelayleader@umcsc.org

S.C. United Methodist Foundation
Dr. Roger M. Gramling, president
803-771-9125;
scumf@bellsouth.net

S.C. Methodist Credit Union
Rex Wilson, Manager and CEO
803-691-0037, 800-532-8814
(f) 803-691-0201
scmccu@bellsouth.net

United Methodist Men President
Herman Lightsey
(e) hblightsey@juno.com

United Methodist Women President
Linda Durant
lindajdurant@yahoo.com

Disaster Response Hotline: 1-800-390-4911

Special Days for 2015

MANDATED BY GENERAL CONFERENCE

Hispanic Heritage Month (GBGM) - Sept 15 - Oct. 15, 2014
World Communion Sunday (GBGM, GBGH, CORR) - October 5, 2014
Children's Sabbath: A National Observance - October 10-12, 2014
Laity Sunday (GBOD) - October 19, 2014
Organ and Tissue Donor Sunday (GBGM) - November 9, 2014
United Methodist Student Day (GBHEM) - November 30, 2014
World AIDS Day - December 1, 2014

Human Relations Day (GBGM, GBCS, CORR) - January 18, 2015
Ecumenical Sunday (CUIC) - January 25, 2015
Week of Prayer for Christian Unity (CUIC) - January 18-25, 2015
Black History Month - February 2015
Golden Cross Sunday (GBGM) - February 1, 2015
Boy Scouts Sunday / Scouting Ministries Sunday - February 8, 2015
Women's History Month - March 2015
World Day of Prayer - March 6, 2015
Girl Scouts Sunday / Alt. Scouting Min. Sunday - March 8, 2015
One Great Hour of Sharing (GBGM) - March 15, 2015
Native American Awareness Sunday (GBGM) - April 19, 2015
Asian Pacific American Heritage Month - May 2015
Christian Home Month (GBOD) - May, 2015
National Day of Prayer - May 7, 2015
Christian Family Week - May 4-10, 2015
Heritage Sunday (Archives and History) - May 24, 2015
Peace with Justice Sunday (GBCS) - May 31, 2015
Hispanic Heritage Month (GBGM) - Sept 15 - Oct. 15, 2015
World Communion Sunday (GBGM, GBGH, CORR) - October 4, 2015
Children's Sabbath: A National Observance - October 11, 2015
Laity Sunday (GBOD) - October 18, 2015
Organ and Tissue Donor Sunday (GBGM) - November 8, 2015
United Methodist Student Day (GBHEM) - November 29, 2015
World AIDS Day - December 1, 2015

S.C. ANNUAL CONFERENCE SPECIAL DAYS AND MONTHS

United Methodist Camps and Retreats Sunday - March 15, 2015
Mother's Day Offering for Epworth Children's Home - May 10, 2015
Advocate Awareness Sunday - May 17, 2015
United Methodist Men's Day - June 14, 2015
Aldersgate Special Needs Sunday with Offering - August 9, 2015
Call to Ministry Sunday - August 16, 2015
Work Day Offering for Epworth Children's Home - September 13, 2015
Youth Service Fund Sunday with Offering - September 20, 2015
SC United Methodist Advance Special Ministries Sunday - November 1, 2015

www.umcsc.org